

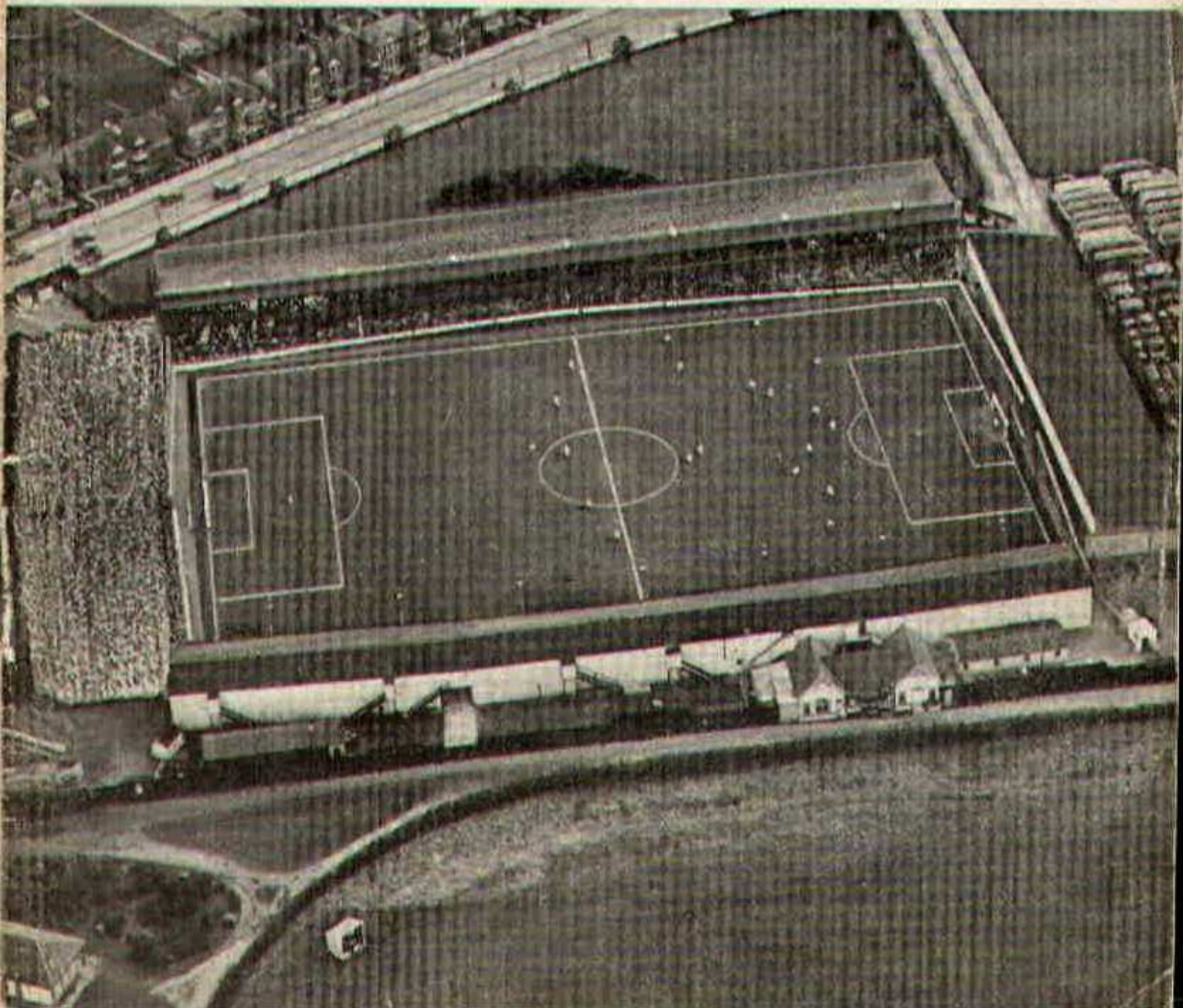
# SWINDON TOWN



# FOOTBALL CLUB

Halifax 62-63

OFFICIAL PROGRAMME 6d.



**FURNITURE AND FURNISHINGS  
OF CHARM AND DISTINCTION**



CARPETS - FLOORCOVERINGS  
LOOSE COVERS - CURTAINS  
SKILLED WORKSHOP REPAIR SERVICE  
AND REMOVALS



Contractors to Government Departments, Hospitals  
and Borough Councils

**MILLS & MERRICKS LTD.**

**16-17 BRIDGE STREET, SWINDON**

**TELEPHONE 5365/6**

Hunt. (Pen)

SATURDAY, 4th MAY, 1963

Division III

**SWINDON TOWN**

v.

**HALIFAX TOWN**

Kick-off 3 p.m.

**REFEREE:**

Mr. J. E. COOKE (Waterbeach)

**LINESMEN:**

Red Flag -

Mr. I. P. JONES (Treharris)

Yellow Flag -

Mr. E. J. KNIGHT (Taunton)

for fine printing  
you should have  
a fine printer

**BOROUGH PRESS (SWINDON) LTD**

## **Maylott Studios**

For **GROUP & SPORT** Photographs

Official Photographer to  
Swindon Town Football Club

**31 FARINGDON ROAD**

TEL. 22792

## **NOTTON'S CAFE**

**COUNTY ROAD**

200 yards from Ground

**RIGHT ON THE BALL**

## **C. DUNN & SON**

**BUILDERS & DECORATORS**

Alterations, Renovations, Conversions

Plumbers & Sanitary Engineers

**503 CRICKLADE ROAD**

TEL. 22522

## **LEESE, ING & Co. Ltd.**

Mineral Water and  
Squash Manufacturers

**Lansdown Rd., Swindon**

Telephone 22744

"COALI"  
"COALI"  
"COALI"

## **J. WILMER**

**ST. MARGARET'S ROAD  
SWINDON**

Telephone 22535

## **L. Wollen**

OFF LICENCE

**WINES and SPIRITS**

Arkell's Ales and Stout

**373 Cricklade Rd., Swindon**  
Deliveries Daily Phone 3508



# WILSONS (SWINDON) LTD.

BUILDERS OF MODERN ATTRACTIVE  
HOUSES AND BUNGALOWS

Enquiries to:

**Head Office:** 90 COMMERCIAL ROAD, SWINDON 6361

**Site Office:** COVENTRY FARM ESTATE, WROUGHTON 271

**Site Office:** QUEENSFIELD ESTATE, STRATTON S.M. 3405

The Rendezvous of all Sportsmen -

## THE CROWN INN

(Host: Frank Plyer)

Arkell's Best Ales : Fully Licensed

Snacks, etc.

Stratton St. Margaret Tel. 2339

Always at your service

## L. BIBBY

For all Types, Rags, Iron and Metal,  
etc. Spot Cash Paid. Please Tel.  
2101 and our van will call.

THE PADDOCK, ERMIN STREET  
STRATTON ST. MARGARET

FISH

POTATOES

T. QUALITY (Swindon)  
LTD.

Wholesale Merchants

COLLEGE STREET

TEL. 5446/7

For Best Quality Wet Fish  
9 a.m. - 6 p.m. (except Mondays)

## YORK ROAD FISHERIES

Frying Mid-day Tuesday, Thursday,  
Friday and Saturday

Phone 3680

# MARSHGATE GARAGE

MOTOR ENGINEERS :: ROOTES GROUP DEALERS

STRATTON ROAD - SWINDON - WILTS.

Tel. Swindon 22788

TWO MINUTES FROM GROUND

## CLUB NOTES - continued

When large sums are borrowed, with a high rate of interest, repayments extend over a long period. This is something to be avoided. It is easy to talk lightly about long-term payments.

It is hoped to complete the payment for the floodlights by November of this year. The cost per month is £275, so there is still £1,925 outstanding. In addition, each half-year the Club has to find £1,300, repayment on the Shrivenham Road stand, and eleven more payments have yet to be made. A total of £14,300, or, including the lights, a debt of £16,225 still to be paid.

The question of further commitments require a great deal of consideration. However, the project is going ahead and it was very pleasing to the Board when a supporter for many years, who now lives out of the town, sent a donation of 50 guineas towards the Development Fund and the new stand.

Some clubs have built new stands from the money derived from the issue of debenture shares: Sheffield Wednesday, for instance, where the accommodation is 10,000 tip-up seats. More seats are urgently required at the County Ground, not only for the comfort of spectators, but also for the increased revenue.

Many people tend to think that a youth policy produces a large surplus of money. Far from it. These young lads have to be paid, right from the age of fifteen years, and many have to be on the staff for a long time before they become of any value to the "bread and butter" team. Some never even reach that stage. Young players (as many clubs have discovered) can be a costly business.

However, Swindon intend to continue this policy. It has certainly produced excellent results to date, but the money obtained from the increased gate has been necessary for its continuance. We can only hope the results will justify the hopes of everyone.

# PANKHURST

The Palace - Gorse Hill - Swindon

MOTOR CYCLE - SCOOTER AND  
THREE-WHEELER SPECIALISTS

Open Mon. to Sat. 9 a.m. - 8 p.m.

Phone 5466

---

Their kit is supplied by

## SWINDON SPORTS CENTRE

WHO HAVE THE BEST SELECTION

Tel. 4270

114 COMMERCIAL ROAD

---

## IVOR MESSENGER & SONS

High-Class Family Butchers

QUALITY WITH ECONOMY :: FAIREST PRICES IN TOWN

1 COLLEGE STREET, SWINDON

Tel. 5647

---

**£10**      **TYPEWRITERS** from      **£10**

FULLY GUARANTEED

Also full selection new standard and portable typewriters  
OFFICE EQUIPMENT

**DOBELL SHEARMAN**  
& Co. Ltd.

26 High Street & 33 Faringdon Road, Swindon.

Tel. 4961/2

## DIVISION III

	P.	W.	D.	L.	F.	A.	Pts.
Northampton Town ...	43	23	10	10	100	60	56
<b>SWINDON TOWN</b> ...	42	20	12	10	82	54	52
Peterborough Utd. ...	43	20	10	13	92	69	50
Coventry City ...	40	17	15	8	78	62	49
Bournemouth & B.A. ...	40	16	14	10	58	42	46
Notts County ...	41	17	11	13	60	67	45
Port Vale ...	40	18	8	14	62	52	44
Southend United ...	40	17	10	13	69	70	44
Hull City ...	40	18	8	14	69	60	44
Colchester Utd. ...	41	16	11	14	67	81	43
Queen's Park Rangers ...	42	17	8	17	82	71	42
Bristol City ...	42	15	12	15	95	84	42
Crystal Palace ...	41	15	11	15	60	56	41
Wrexham ...	40	17	7	16	77	79	41
Watford ...	42	16	7	19	75	77	39
Shrewsbury Town ...	42	14	11	17	78	79	39
Millwall ...	41	13	12	16	69	75	38
Bradford ...	43	13	12	18	74	90	38
Barnsley ...	40	13	10	17	58	64	36
Bristol Rovers ...	41	13	10	18	64	82	36
Brighton & H.A. ...	43	12	11	20	57	79	35
Reading ...	40	14	7	19	66	63	35
Carlisle United ...	40	10	8	22	52	78	28
Halifax Town ...	41	7	11	23	55	99	25

## OUR VISITORS

Founded as a result of a meeting among interested local people at a Halifax hotel some fifty years ago, Halifax Town, despite many hard struggles, have kept the soccer flag flying worthily ever since.

The highlight of their post-war career from 1945 onwards was to reach the 5th round of the F.A. Cup in Season 1952-3, when they were beaten in the second half of the game 0-3 by Tottenham Hotspur before 36,995 spectators at The Shay. That brought the biggest "gate" to their Shay Ground, which they opened in Season 1921.

Further soccer history was made at The Shay only last November by the visit there of Belgrade, the Yugoslavia team, who attracted some 10,000 spectators.

Situated alongside neighbouring stronger league clubs with a bigger drawing power, Halifax Town nevertheless have fought hard and purposefully since the last war.

Qualifying by their success for the newly-formed Third Division a few years ago, they have more than justified a place therein, and, despite having to have a small playing staff, have given a good account of themselves, especially in the first half of the season.

Foremost among the progress made at the ground itself was the innovation only last season of a fine modern floodlight system, easily the biggest project launched since the terracing of part of the ground and the building of concrete terraces at the rear of the Hunger Hill end of the ground.

While there have been some notable performers with the Town, one calls to mind Frank Large, transferred in the close season to Queen's Park Rangers. An outstanding record of consistency was that of fullback Bill Allsop, captain of the

For Quality FLOWERS - FRUIT - VEGETABLES  
also FROZEN FOODS

## CLARKE'S of Old Swindon

Proprietors: A. G. G. and J. A. W. HUNT

64 DEVIZES ROAD - SWINDON

Phone 22337

ORDERS DELIVERED

---

## SEA VIEW CAMP

Camp Road, Wyke Regis, Weymouth. Tel 3351

Site overlooks Chesil Beach - Ideal for Camping Parties  
Also Modern Caravans for Hire

---

## Swindon Bacon Curing Co. Ltd.

Specialists in

BACON - PORK - COOKED HAM

50 FLEET STREET, SWINDON

Telephone 22122

---

Meet your friends for an enjoyable evening at

## THE KINGSDOWN INN

(Host A. W. Vann)

FULLY LICENSED - ARKELL'S BEERS

SNACKS - Etc.

STRATTON ST. MARGARET

Tel. 3283

## **OUR VISITORS - continued**

club just after the last war, who in 8 out of 13 seasons at The Shay had been an ever-present and could claim over 500 first-team appearances.

A new era begins this season with a completely new set-up administratively which augurs well for the immediate future. Given adequate support, which fell far short in the last campaign due to a combination of circumstances, adverse weather, postponement of key fixtures and other factors, further progress should be ensured.

### **PEN PICTURES**

#### **Peter Downsborough (Goalkeeper)**

A local boy who was on the groundstaff. Capped as an amateur with the West Riding County F.A. Signed professional forms September, 1960. Has a great future in front of him. Height 5ft. 11ins. Weight 11st. 0lbs.

#### **David Knowles (Goalkeeper)**

Another local boy graduated from the 'A' team. Signed professional December, 1958. Height 5ft. 10ins. Weight 11st. 9lbs.

#### **Paddy Stanley (Full Back)**

Born in Dublin. Was on Leeds United's groundstaff from the age of 15. In 1955 signed professional for Leeds United, signed by Halifax at a fee in 1958. Height 6ft. 1in. Weight 13st. 4lbs.

#### **Colin Strodder (Full Back)**

Transferred from Huddersfield Town at the culmination of his contract in 1961, and has played consistently well. Height 5ft. 9ins. Weight 10st. 8lbs.

#### **Phil Roscoe (Full Back)**

Born in Barnsley. Signed from home town in 1957. Graduated from the Barnsley Youth XI. Height 6ft. 1in. Weight 13st. 4lbs.

## **OUR VISITORS—continued**

### **Mike Burgess (Half Back)**

Canadian by birth. Playing experience with Bradford, Leyton Orient, and Bournemouth before signing for Town in the close season of 1961. A strong and forceful player, good clubman. Height 6ft. 1in. Weight 11st. 8lbs.

### **Eric Harrison (Half Back)**

Another local product. Graduated from the 'A' side and has been with the club since 1956. Another boy who has a great future in front of him. Height 5ft. 11ins. Weight 11st. 6lbs.

### **Alex South (Half Back)**

Born in Brighton. Signed from Liverpool in 1958 season. Regular first XI player. Knows the game inside out. Height 5ft. 11ins. Weight 10st. 10lbs.

### **Peter Tilley (Half Back)**

Born Lurgan, Northern Ireland. Signed from Bury in 1958. Previous club was Arsenal. Irish international. Height 6ft. 0ins. Weight 12st. 9lbs.

### **John Brier (Half Back)**

A local boy who was with Burnley F.C. for two seasons and returned to Halifax in August 1961. Height 5ft. 11ins. Weight 11st. 7lbs.

### **George Reed (Half Back)**

Signed professional terms with Halifax in August, 1961. Previously with Swillington as an amateur. Height 5ft. 10ins. Weight 11st. 10lbs.

### **Gerry Priestley (Outside Right)**

Native of Queensbury, near Halifax. Signed from Crystal Palace in July, 1960. Experienced player, spent five years with Grimsby Town. Height 5ft. 8ins. Weight 10st. 5lbs.

# **B. J. MARTIN & SONS LTD.**

*Butcher*

10 HIGH STREET  
MARLBOROUGH  
Phone 212

126 VICTORIA ROAD  
SWINDON  
Phone 4860

# **CLARK BROS. (SWINDON) LTD.**

**BUILDING AND CIVIL ENGINEERING  
CONTRACTORS  
SWINDON**

Telephone: Swindon 3417/8/9

Do not let **CHILBLAINS** spoil a good game

**RELAPERNE**

Price 2/6 from your CHEMIST

2/10 Post Paid from

**Ballard & Co. (Chemists) Ltd., Faringdon, Berks.**

## **OUR VISITORS**—continued

### **Barry Tait (Outside or Inside Right)**

Signed from Bradford City on the culmination of his contract this season. Height 5ft. 6ins. Weight 10st. 3lbs.

### **David Worthington (Inside Right)**

A local boy who has graduated from the amateur ranks and who has a future in front of him. Height 5ft. 8½ins. Weight 9st. 6lbs.

### **Billy White (Inside Forward)**

Now on trial. Spent 5 years with Burnley. Height 5ft. 8ins. Weight 11st. 10lbs.

### **Bill Holden (Centre or Inside Forward)**

Signed from Bury during the close season. A player who is dedicated to the game and knows all the turns. Height 5ft. 11½ins. Weight 11st. 11lbs.

### **Bill Hopper (Centre Forward)**

Bill signed on in December 1951. Previously was with the Bishop Auckland club. Height 5ft. 11½ins. Weight 12st. 9lbs.

### **Malcolm Russell (Inside Forward)**

One of the apprentice professionals, another local boy whom it is thought will have a future in front of him. Height 5ft. 9ins. Weight 11st. 11lb.

### **Brian Redfern (Outside Left)**

Like Mike Burgess, he started his career with Bradford P.A., was transferred to Blackburn Rovers, then to Darlington and went to Halifax at a nominal fee in 1961. Height 5ft. 11ins. Weight 13st. 6lbs.

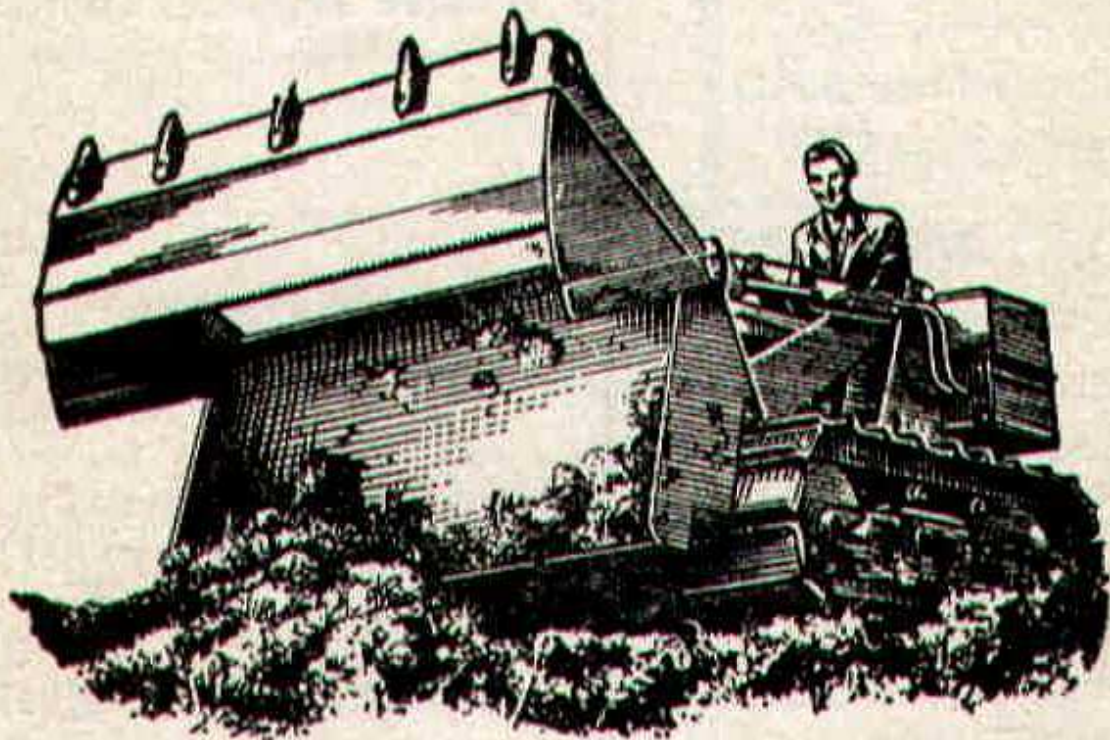
## DIVISION III FIXTURE LIST

Date	Opponents	Ground	Result
August 18	BARNSELY .....	(A)	1-1
21	COVENTRY CITY .....	(H)	4-1
25	NORTHAMPTON TOWN .....	(H)	2-3
28	COVENTRY CITY .....	(A)	0-2
September 1	QUEEN'S PARK RANGERS .....	(A)	2-2
4	BRIGHTON and HOVE ALBION .....	(A)	1-1
8	HULL CITY .....	(H)	2-0
11	BRIGHTON and HOVE ALBION .....	(H)	5-1
15	CRYSTAL PALACE .....	(A)	0-0
18	CARLISLE UNITED .....	(A)	0-0
22	WREXHAM .....	(H)	3-0
25	DARLINGTON (Cup) .....	(H)	4-0
29	HALIFAX TOWN .....	(A)	3-4
October 2	BRISTOL ROVERS .....	(H)	3-0
6	WATFORD .....	(H)	3-1
9	BRISTOL ROVERS .....	(A)	0-2
13	BRISTOL CITY .....	(A)	2-2
20	READING .....	(H)	1-1
27	PORT VALE .....	(A)	1-2
November 3	(1) READING .....	(H)	4-2
10	MILLWALL .....	(A)	4-3
17	SOUTHEND UNITED .....	(H)	4-1
24	(2) YEOVIL .....	(A)	2-0
December 1	NOTTS COUNTY .....	(H)	3-1
8	BOURNEMOUTH and B.A. ....	(A)	0-0
15	BARNSELY .....	(H)	2-1
26	BRADFORD .....	(A)	0-2
<b>1963</b>			
January 12	QUEEN'S PARK RANGERS .....	(H)	5-0
19	HULL CITY .....	(A)	0-0A
26	(3) LUTON TOWN .....	(A)	2-0
29	(4) EVERTON .....	(H)	1-5
February 2	CRYSTAL PALACE .....	(H)	1-0
23	WATFORD .....	(A)	3-3
27	WREXHAM .....	(A)	0-0
March 2	BRISTOL CITY .....	(H)	3-2
8	(6) READING .....	(A)	2-1
16	PORT VALE .....	(H)	2-3
23	SHREWSBURY TOWN .....	(A)	2-1
26	NORTHAMPTON TOWN .....	(A)	1-1
30	(S.F.) MILLWALL .....	(H)	1-0
April 2	BRADFORD .....	(H)	2-1
6	SOUTHEND UNITED .....	(A)	1-1
12	PETERBOROUGH UNITED .....	(H)	2-3
13	COLCHESTER UNITED .....	(H)	6-1
15	PETERBOROUGH UNITED .....	(A)	1-3
20	NOTTS COUNTY .....	(A)	0-2
27	BOURNEMOUTH and B.A. ....	(H)	2-1
30	CARLISLE UNITED .....	(H)	2-0
May 4	HALIFAX TOWN .....	(H)	.....
6	COLCHESTER UNITED .....	(A)	.....
14	SHREWSBURY TOWN .....	(H)	.....
18	HULL CITY .....	(A)	.....

# H. HIBBERD LIMITED

40 NEWPORT STREET - SWINDON

PLANT HIRE



TRACTORS and SCRAPERS

BULLDOZERS

DROTT SHOVELS

J.C.B. and DINKUM DIGGERS

ROAD ROLLERS

TELEPHONE: SWINDON 6125

## Hatton's Newsagency

A. J. D. Woodhouse and A. Smith

**Newsagents :: Tobacconists  
Confectioners**

Agents for Wessex School of  
Motoring

Main Booking Agents for Millers  
Coaches

**6 Regent Circus** (near G.P.O.)

Telephone Swindon 22731

## HULFORD MOTORS Ltd.

**SELF DRIVE HIRE**

Fleet of 1963 Fords  
Anglias De-Luxe - Cortinas  
De-Luxe - Zephyr 4s.

**SHRIVENHAM ROAD**

(200 yards from Football Ground)

Phone 4934

Large Car Park available

For High Class  
Central Heating, Plumbing  
Painting and Decorating  
Electrical Installations  
and Repairs

**NORTH WILTS  
Sanitary & Heating  
Co. Ltd**

**NEWPORT ST., SWINDON**

Phone 5373/4

## WARNES (Swindon)

Electrical Contractors - Radio

Contractors to SWINDON TOWN

**160 COUNTY ROAD, SWINDON  
9 SWINDON STREET, HIGHWORTH  
7 CLIVE PARADE, SWINDON**

RIGHT WING

SWINDON

Turner

Owen (2)

Troll

Morgan (4)

McPherson (5)

Summerbee (7)

Hunt (8)

Stevens (9)

Swindon Colours:  
RED SHIRTS, WHITE SHORTS

**FOOTBALL  
PINK**

Fidler (11)

Carlin (10)

Redfearn (9)

Harrison (6)

Tilley (5)

Roscoe (3)

Rus

Downsbrough

LEFT WING

HALIFAX TOWN

## WARNES T.V.

TO BE SURE

51 Commercial Road - Swindon

and Branches

# S (Swindon) LTD.

actors - Radio and Television

WINDON TOWN FOOTBALL CLUB

ON  
WORTH  
N

PHONE 6346/7  
PHONE 379  
PHONE 6346/7

SWINDON

LEFT WING

Turner

2) Trollope (3)  
McPherson (5) Woodruff (6)  
Stevens (9) ~~Jackson~~ (10) Darcy (11)  
*Atkins*

**FOOTBALL  
PINK**

These teams are subject  
to alteration

Redfearn (9) Tait (8) Worthington (7)  
Tilley (5) South (4)  
3) Russell (2)

Downsbrough  
HALIFAX TOWN

RIGHT WING

# S T.V. RENTALS

TO BE SURE

oad - Swindon - Phone 6486

and Branches

# McILROYS

## RESTAURANT

for morning coffee,  
luncheon and  
afternoon tea - in  
pleasant surroundings -  
you will find McIlroys  
are top of the  
'league'.

Full table service, best Beers  
and Wines. Parties and  
Functions catered for.

## McIlroys Restaurant

64-72 Regent Street  
Tel. 5294



THE ALCOHOL FUEL

## COATE GARAGE

REPAIRS - OVERHAULS - WELDING  
SERVICING - REBORING - TYRES

Props. E. V. & W. H. Mattick

Marlborough Rd., Swindon

## SUPPORTERS' CLUB NOTES

We are sure that all will be interested to know that last Saturday's collection, on behalf of the Swindon Schools' Football Association, produced a sum in the region of £47. A cheque from this Club for £50 has been sent to the Officials of the Association. It has been a privilege to be able to do something to assist them in their work, and we are grateful to all who responded to the Appeal.

Some who were unable to be present at the match gave us their contributions previously, in order to be associated with the effort, and we should also like to record that a number of Bournemouth supporters contributed generously.

Thank you very much, everyone! This effort may well assist Swindon football in the future.

Tickets are very much in circulation at present, and our Committee members will be very pleased to unload.

First, there are the Derby Draw tickets at one shilling each, with cash prizes of £100, £75, £50 and £25, with £2 for every other horse drawn.

Next, we would once again remind supporters that tickets for the End of Season Dance are available at five shillings.

This will be held at Messrs. McIlroys' Ballroom on Friday, 31st May, from 8 p.m. to 1 a.m.

Harry Smith's Orchestra and Johnny Graham's "Dukes" will be in attendance, and we gather that Bert Head and his "Singing Robins" will be present.

By that time we shall know what kind of song they are likely to be able to sing. It depends on the results from now until the end of the season, both of Swindon's and Coventry's matches.

Nevertheless it should be a very enjoyable social occasion in any event, and during the course of the evening it is intended to make a further payment to the Directors of Swindon Town F.C.

HAVE YOU SIGNED ON YET

FOR  
YOUR

# SWINDON ECHO

4d.  
WEEKLY

IF NOT THEN DO SO AT YOUR LOCAL NEWSAGENT  
AND JOIN OUR GROWING TEAM OF READERS

---

For your pleasure try

## RIVERSIDE LECHLADE LTD.

Tea Room and Gardens - Boating

4 Berth and 2 Berth Cabin Cruisers for hire, also Motor Boats,  
Camping Punts, Rowing Boats, Canoes, etc. Parties catered for.

PRIVATE CAR PARK

Telephone: Lechlade 229

---

## Little & Co. Ltd.

Try us for  
Clothes for all  
the family on  
all occasions

31-32 FLEET STREET  
SWINDON

Tel. 22831

We have a  
reputation for  
**Value & Service**  
that is second  
to none

THE POPULAR MEN'S & LADIES'  
COMPLETE OUTFITTERS

---

SEE THE LOVELY SELECTION OF  
CHOCOLATES AND SWEETS  
Greetings Cards a Speciality

## CECIL GREEN

CONFECTIONER AND TOBACCONIST

13 VICTORIA ROAD

Telephone 4416

## SUPPORTERS' CLUB NOTES - continued

Tickets for this event also are available from members of the Committee or from our Social Secretaries, Mr. and Mrs. W. Ranger, of 52 Medgbury Road, Swindon. Please make sure of yours now.

In spite of the approach of the end of the season, the weekly Competition still shows a profit in the neighbourhood of £300 each week.

It is gratifying to see that a number of the prizes go to our country friends regularly, for they are an integral part of our organisation and a most valuable nucleus of the support given to the team.

We cannot repeat too often how much we value their support in our efforts and at the matches.

The Committee will decide shortly what type of competition will be run next season.

Some of our friends have expressed the desire to revert to the former type as they feel that, being allied to football, it arouses more interest than the "lucky number" type of competition at present in vogue.

We know that, whatever the decision reached by the Committee, the efforts of next season will once again be accorded the full support of our members, and that with the usual co-operation we shall once again be able to do something to assist the Town F.C. in all its activities.

We hope to bring our membership into line with the "gates" at the matches. That indeed would indicate a strong Club—a Club that would enable the Directors of the Town F.C. to plan with confidence.

Just a preliminary warning then — we shall be after everyone next season — we want all of you to become members of the Supporters' Club — YOUR CLUB.

F. J. ROPER  
DEVIZES RD.  
SWINDON

Phone 22341

FERNDALE  
FISHERIES  
FERNDALE RD.  
SWINDON

Phone 3614

**SWINDON'S  
FINEST  
FISH and CHIPS**

**CALL ON  
YOUR  
WAY  
HOME**

F. J. ROPER  
CLIFTONIAN  
38 WILLIAM ST.  
SWINDON  
Phone 3785

**WE SHALL BE  
WAITING  
TO  
SERVE YOU**

**Menu**

**Plaice  
Hake  
Cod  
Skate**

F. J. ROPER  
HIGH ST.  
WOOTTON  
BASSETT

F. J. ROPER  
CROSS HAYES  
MALMESBURY

# WILTSHIRE PREMIER LEAGUE

## Fixtures and Results to date

Date	Opponents	Ground	Result
August 18	RADSTOCK .....	(H)	1-1
22	PINEHURST .....	(A)	1-4
25	STONEHOUSE .....	(A)	3-0
29	PINEHURST .....	(H)	1-0
September 1	PURTON .....	(H)	3-1
8	CALNE .....	(A)	2-0
15	DEVIZES .....	(H)	6-1
19	FROME .....	(A)	1-3
22	TROWBRIDGE .....	(H)	2-0
29	FROME .....	(H)	3-0
October 6	WARMINSTER .....	(H)	3-1
13	PEASEDOWN .....	(A)	2-1
20	CLANDOWN .....	(H)	6-0
27	PAULTON .....	(A)	1-1
November 3	WESTBURY .....	(H)	5-4
10	MELKSHAM .....	(A)	0-3
24	CHIPPENHAM .....	(H)	6-1
December 1	WOOTTON BASSETT .....	(A)	4-1
8	PAULTON R. ....	(H)	5-2
15	STONEHOUSE .....	(H)	4-0
22	PURTON .....	(A)	5-0
29	CALNE .....	(H)	P
<b>1963</b>			
January 5	DEVIZES .....	(A)	P
19	WARMINSTER .....	(A)	P
26	PEASEDOWN .....	(H)	20-1
February 2	CLANDOWN .....	(A)	F
16	WESTBURY .....	(A)	P
23	MELKSHAM .....	(H)	P
March 2	CHIPPENHAM TOWN .....	(A)	11-0
9	CLANDOWN .....	(A)	1-0
23	RADSTOCK .....	(A)	1-1
30	TROWBRIDGE .....	(A)	5-2
April 3	DEVIZES .....	(A)	3-1
6	MELKSHAM .....	(H)	3-1
10	SWINDON B.R. ....	(A)	3-0
13	WESTBURY .....	(A)	3-1
20	WARMINSTER.....	(A)	7-0
24	WOOTTON BASSETT .....	(H)	5-1
27	CALNE .....	(H)	5-1

This space is reserved for

**EDWIN H. BRADLEY & SONS LTD.**

**Builders - Swindon**

---

***Eric***

(E. Ayliffe)

**GENTLEMEN'S HAIRDRESSER**

57/59 Faringdon Road, Swindon.

Phone 4569

APPOINTMENTS MAY BE BOOKED IN PRIVATE SALON

---

**ALSTON & YOUNG LTD.**

121-123 CRICKLADE ROAD, SWINDON.

Tel. 6671

**Scooter and Three-Wheeler Specialists**

Main Agents - LAMBRETTA - VESPA - TROJAN

First class after sales service

Open daily 9.0 a.m. to 7.30 p.m.

---

**SUPPORT YOUR HOME**

**CIVIL DEFENCE**

**Plays a vital part in saving lives**

**in PEACE or WAR**

Particulars:

**CIVIC OFFICES, SWINDON**

**WISES CATERING**

**SERVICE**

(Reg. Wise)

Our Caterer for the past 14 seasons

Guarantees

**A GOOD CUP OF TEA AT THE  
COUNTY GROUND**

A full range of Sweets & Cigarettes  
at any of our five kiosks on your  
way in. **ENJOY YOURSELF!**

## KEY OF THE BOARD

### First Section

- A—Aston Villa v. Notts Forest
- B—Burnley v. Manchester Utd.
- C—Everton v. Bolton W.
- D—Fulham v. Birmingham C.
- E—Manchester C. v. Blackpool
- F—Sheffield W. v. Leyton Orient
- G—Spurs v. Sheffield Utd.
- H—West Brom A. v. Leicester C.
- I—West Ham v. Blackburn
- J—Wolves v. Ipswich
- K—Leeds Utd. v. Luton
- L—Norwich C. v. Newcastle
- M—Portsmouth v. Cardiff C.
- N—Preston N.E. v. Huddersfield
- O—Rotherham v. Walsall
- P—Sunderland v. Southampton
- Q—Bournemouth v. Shrewsbury
- R—Bradford v. Reading
- S—Brighton v. Watford
- T—Hull City v. Barnsley

### Second Section

- A—Notts County v. Millwall
- B—Doncaster v. Southport
- C—Exeter C. v. Chester
- D—Hartlepoons v. Lincoln C.
- E—Mansfield T. v. Gillingham
- F—Oxford v. Darlington
- G—Workington v. Crewe A.

# **BRETTS** PET AND GARDEN SUPPLIES

**32-33 COMMERCIAL ROAD**

and

**6 CROMWELL STREET - SWINDON**

---

When thinking of your new  
T.V. - Radio - Washing Machine - Refrigerator  
make your **GOAL**

## **HOLMES & LUCAS**

**14 REGENT STREET - SWINDON**

Stockists of all leading makes

Telephone 22526-4721

---

FOR ALL YOUR ANGLING NEEDS  
CONSULT

### **FRANK WOODWARD**

Swindon's Fishing Tackle Specialist

**25 HAVELOCK ST., SWINDON**  
PHONE 3879

For Paints of Good Quality  
**H. S. HODGES & SONS**  
(SWINDON) LTD.

**CRICKLADE RD. - SWINDON**  
PHONE 22422

Dulux, Broloc, Friary, Valspar,  
Wallcharm, etc.

---

### **SOUTHERN LAUNDRY** Co. Ltd.

Launderers and Dry Cleaners

**STATION ROAD - SWINDON**  
TELEPHONE 4161

### **COMLEY'S**

Modern Music Centre  
**26 HAVELOCK ST., SWINDON**  
RECORDS - MUSIC - INSTRUMENTS

Top Twenty 'Pops' always in stock  
and wide selection of Jazz & Classics  
Personal Supervision Phone 3874

# FOOTBALL COMBINATION

## Fixtures and Results to date

Date	Opponents	Ground	Result
August 18	SOUTHEND .....	(H)	3-1
21	MILLWALL .....	(A)	1-2
25	BOURNEMOUTH and B.A. ....	(A)	3-1
September 1	CHELSEA .....	(H)	0-2
3	WATFORD .....	(A)	2-2
18	QUEEN'S PARK RANGERS .....	(H)	3-2
26	SOUTHAMPTON .....	(A)	3-3
October 23	COVENTRY CITY .....	(H)	2-0
27	ALDERSHOT .....	(H)	0-0
November 7	LEYTON ORIENT .....	(A)	3-6
10	BRIGHTON .....	(H)	1-0
27	BRENTFORD .....	(H)	2-2
December 8	CHARLTON .....	(A)	2-2
11	FULHAM .....	(H)	6-1
19	PORTSMOUTH .....	(A)	3-1
22	BIRMINGHAM .....	(A)	0-3
<b>1963</b>			
January 1	READING .....	(H)	P
9	READING .....	(A)	P
15	BOURNEMOUTH and B.A. ....	(H)	3-1
19	SOUTHEND .....	(A)	P
29	WATFORD .....	(H)	P
February 4	QUEEN'S PARK RANGERS .....	(A)	P
6	CHELSEA .....	(A)	0-3
9	BIRMINGHAM .....	(H)	4-2
12	MILLWALL .....	(H)	3-3
26	SOUTHAMPTON .....	(H)	0-0
March 6	COVENTRY CITY .....	(A)	P
9	ALDERSHOT .....	(A)	P
11	SOUTHEND UNITED .....	(A)	3-1
19	LEYTON ORIENT .....	(H)	3-1
23	BRIGHTON .....	(A)	0-1
April 6	PORTSMOUTH .....	(H)	1-2
9	BRENTFORD .....	(A)	1-2
16	CHARLTON .....	(H)	0-3
22	FULHAM .....	(A)	3-4
May 7	READING .....	(H)	.....
11	QUEEN'S PARK RANGERS .....	(A)	.....
18	READING .....	(A)	.....
15	WATFORD .....	(H)	.....

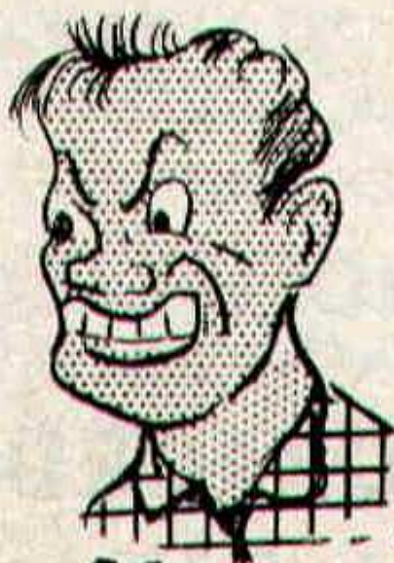


# *At the FINAL WHISTLE*

WHETHER YOU FEEL



*Sad*



*Mad* or *Glad*



**PLEASE  
DO NOT CROSS THE  
PLAYING PITCH**

## FORTHCOMING MATCHES

TUESDAY, MAY 7th, 1963

Football Combination

# SWINDON TOWN

*v.*

# READING

Kick-off 7.30 p.m.

---

THURSDAY, MAY 9th, 1963

WESSEX YOUTH LEAGUE

# SWINDON TOWN

*v.*

# OXFORD

Kick-off 7.30 p.m.

---

TUESDAY, MAY 14th, 1963

DIVISION III

# SWINDON TOWN

*v.*

# SHREWSBURY TOWN

Kick-off 7.30 p.m.

**G. A. STREETLY**

**Tobacconist and Confectioner**

**10 BOURNE ROAD - MOREDON - SWINDON**

Telephone: 4956

---

**ADVERTISING SPACE**

**IN THIS PROGRAMME**

**TO LET**

Apply:-

SECRETARY,  
SWINDON TOWN F.C.,  
COUNTY GROUND, SWINDON

Have you purchased your ticket for the

**DEVELOPMENT  
FUND  
COMPETITION?**

**TICKETS 1/- each**

**Draw at half-time today for**

**£100**

**other Prizes Monday to Friday**

**£20 EACH DAY**

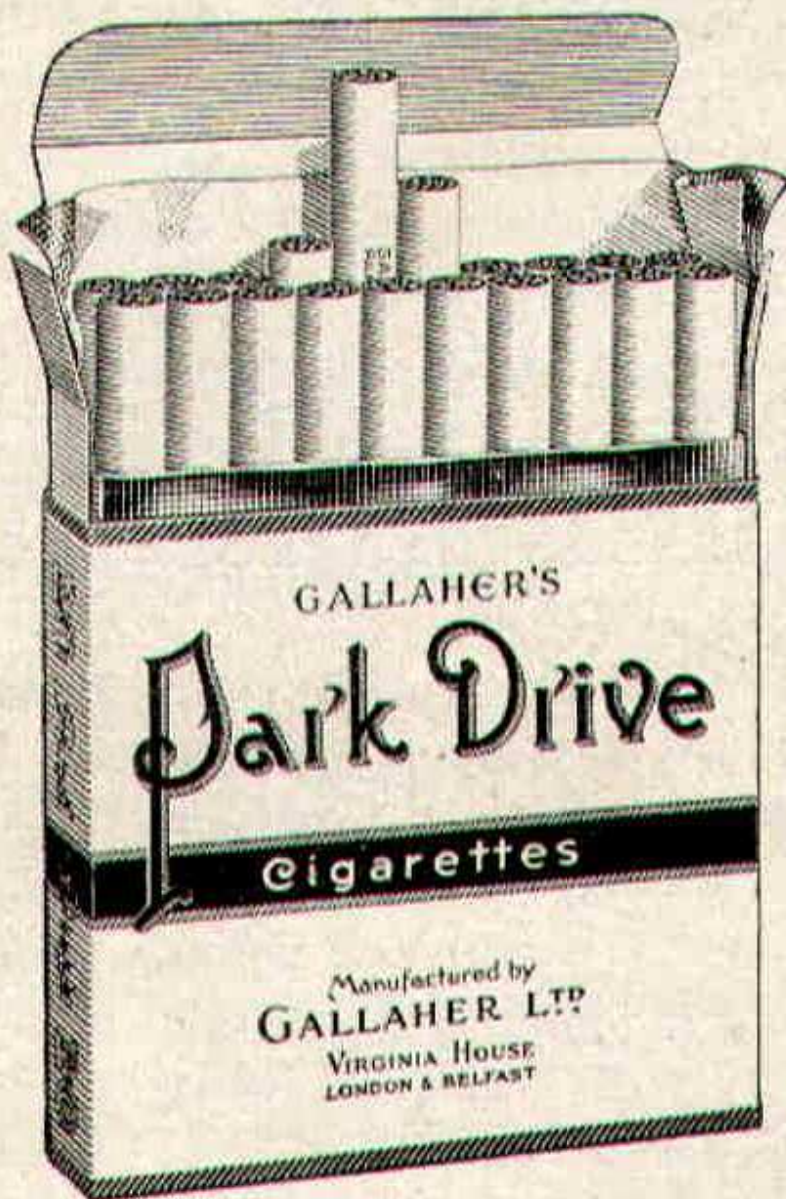
Results published daily in -

"Daily Sketch"

"Evening Advertiser" and

"Bristol Evening Post"

# PARK DRIVE



for pleasure

**PLAIN OR TIPPED**

# PLAYERS APPEARANCES AND GOAL SCORERS

## Div. III FA & Lge Cups

Player	Div. III FA & Lge Cups App. Goals	Football Combination Appearances	Goals
Turner	32	21	-
O'Hara	10	23	6
Wollen	21	8	-
Trollope	42	25	-
Morgan	42	24	-
Owen	26	4	1
Woodruff	40	23	20
Summerbee	33	24	5
Darcy	25	11	4
Hunt	39	17	2
Jackson	39	4	-
Smith	40	16	7
Smart	7	4	2
McPherson	26	3	-
Atkins	6	1	-
Stevens	10	4	-
Rogers	7	17	2
Chamberlain	1	6	-
Dawson	10	2	-
Huxford	1	-	-
Harber	2	-	-
Weaver	3	-	-

Player	Div. III FA & Lge Cups App. Goals	Football Combination Appearances	Goals
Dawson	-	21	-
Smart	-	23	6
McPherson	-	8	-
Harber	-	25	-
Shergold	-	24	-
Darcy	-	4	1
Stevens	-	23	20
Leggett	-	24	5
Weaver	-	11	4
Rogers	3	17	2
Colsell	6	4	-
Atkins	4	16	7
Summerbee	6	4	2
Mellor	-	3	-
Leyton	-	1	-
Jackson	-	4	-
Huxford	-	17	2
Owen	-	6	-
Peapell	-	2	-
Trollope	-	1	-
Morgan	-	1	-
Woodruff	-	1	-
Hunt	-	1	1
Chamberlain	-	7	2
Smith	-	1	1
Tabor	-	2	-
Plumb	-	4	-
Collins	-	2	-
Lloyd	-	1	-

## Football Combination

Player	Football Combination Appearances	Goals
O'Hara	15	-
Hicks	4	-
Turner	7	-
Hellin	24	-

## STAND TICKETS

Tickets for seats in the Old and New Stands may be booked in advance. Postal applications should be accompanied by a remittance and stamped addressed envelope. Tickets ordered by telephone must be collected not later than 12 noon on the day of the match, otherwise they will not be reserved.

Prices for League Matches:-

**New Stand:** Block C-6/6 (Centre)

Blocks B and D-5/6 (Side Stands)

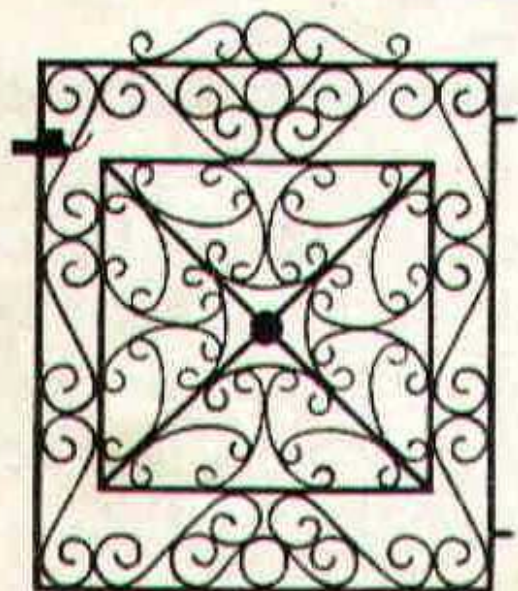
Blocks A and E-4/6 (Wing Stands)

**Old Stand:** Centre Box-8/-

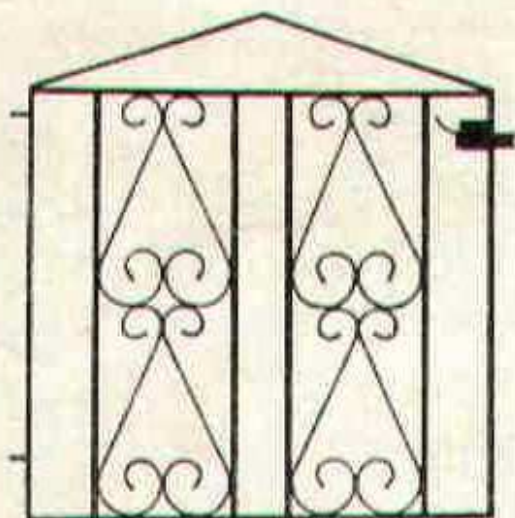
Block H-5/6 (Centre)

Blocks F, G and I-4/- (Side Stands)

Postal applications to: Secretary, Swindon Town F.C., County Ground, Swindon, Wilts. Telephone Swindon 22118.



T.G. 621



T.G. 626

**Gates from 58/-**  
Singles and Doubles

If you live in the Swindon  
area we will measure your  
Gateway for you.

---

Our Decorative Ironwork  
also includes:

FIRESCREENS  
COFFEE TABLES  
LAMPS  
BRACKETS  
CORNER TABLES  
BALUSTRADES

SEND FOR FREE CATALOGUE  
**MARTYN LYNSHAW LIMITED**

20 Boundary Works, Stratton Road,  
**SWINDON. TEL. 4177**